

MONTHLY MEMBERSHIP PROGRESS REPORT

District 31 N

Results as of: 5/31/2024

GMT:

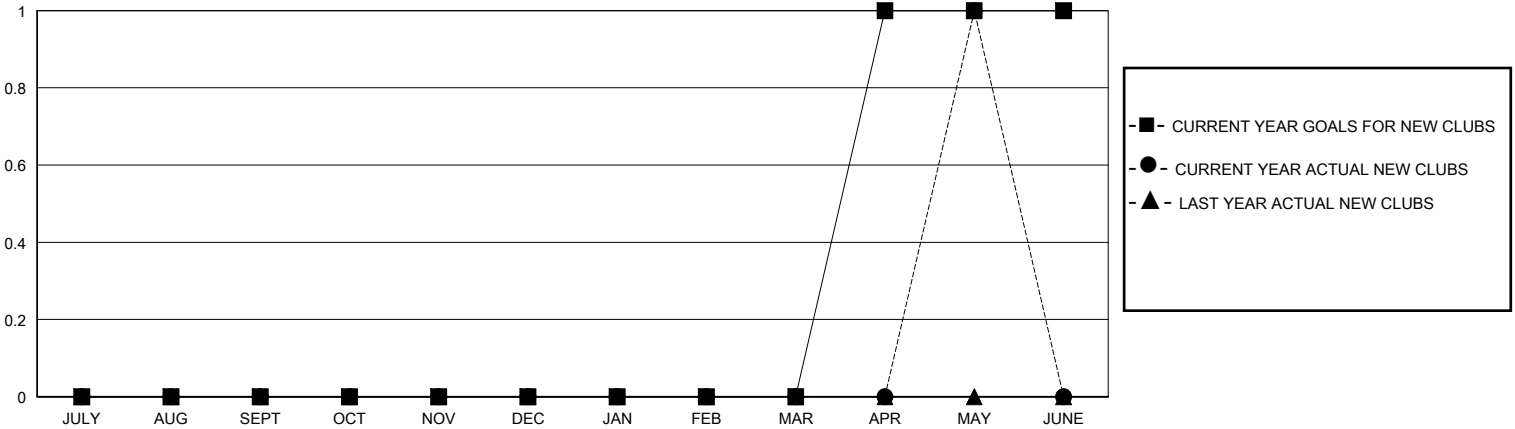
LOCATION NORTH CAROLINA

GMT CA

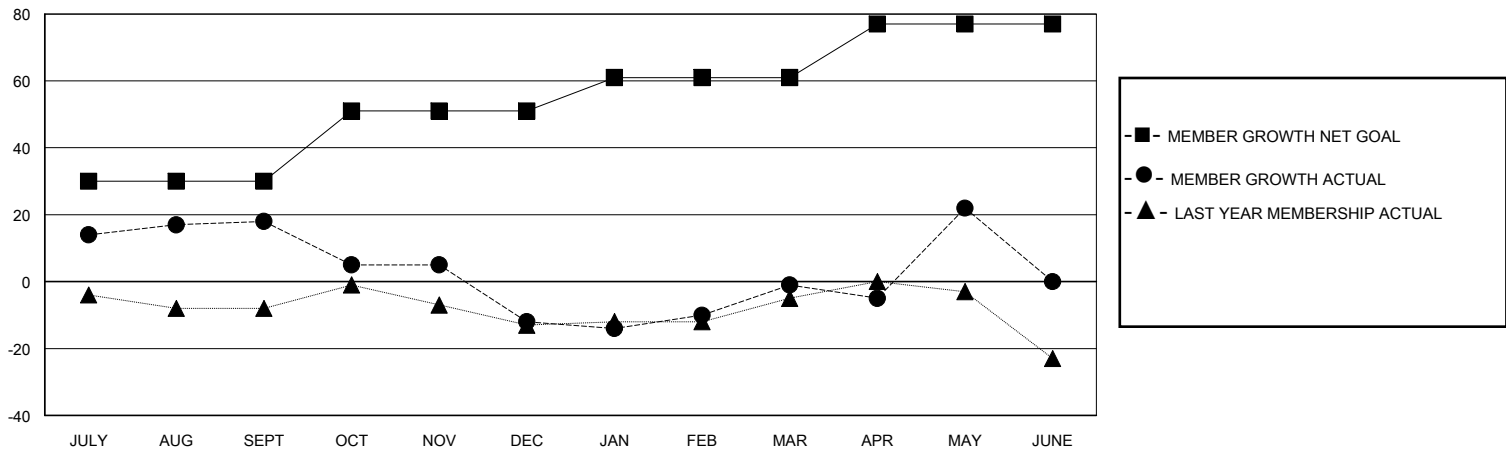
Clubs			
RESULTS FOR 2023-2024			
QUARTER	NEW CLUB GOAL	NEW CLUBS	DROPPED CLUBS
JULY/AUG/SEPT	0	0	0
OCT/NOV/DEC	0	0	1
JAN/FEB/MAR	0	0	0
APR/MAY/JUNE	1	1	0

Members			
RESULTS FOR 2023-2024			
QUARTER	MEMBER GROWTH NET GOAL	MEMBER GROWTH ACTUAL	DROPPED MEMBERS ACTUAL (including transfers)
JULY/AUG/SEPT	30	50	24
OCT/NOV/DEC	21	32	53
JAN/FEB/MAR	10	42	22
APR/MAY/JUNE	16	42	16

GOALS AND ACTUAL NEW CLUBS CUMULATIVE



GOALS AND ACTUAL MEMBERS CUMULATIVE



DROPPED CLUBS: 1	28 CLUBS OF 54 ADDED 1 OR MORE NEW MEMBERS	GENDER DISTRIBUTION	
		MALE	640 (63.18%)
		FEMALE	373 (36.82%)
DROPPED MEMBERS		TOTAL FAMILY UNIT MEMBERS	241
DECEASED	17	FAMILY MEMBERS PAYING HALF DUES	125
CLUB CANCELLED	7		
OTHER	91		
TOTAL	115		

[CLICK HERE FOR CUMULATIVE MEMBERSHIP DATA](#)